

Another Benderlink Success Story

BENDERLINK for Chiyoda and KEINS

CUSTOMER PROFILE

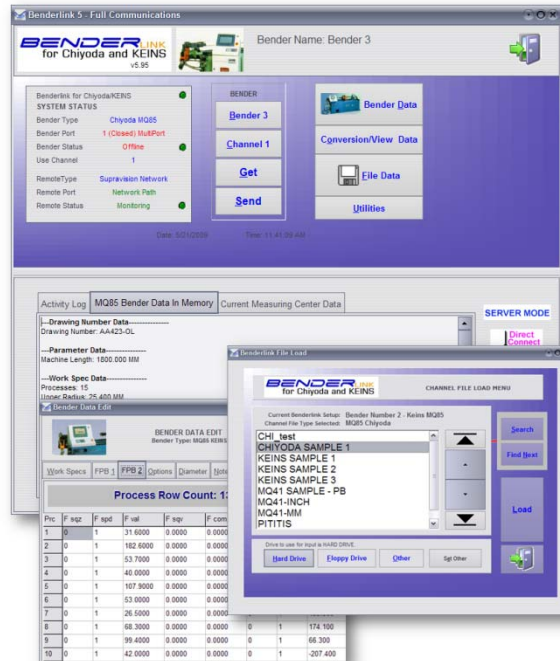
Fuel and brake lines
High bend count
Complex tube planes
Multiple benders (7)

ISSUES

Multiple bender setups with changing tool sets every day required fine tuning even existing part programs.
CNC bender setup required hours to program and adjust.
Inspection and correction required manual user input.

GOALS

Reduce errors in initial setup
Reduce bender correction time
Reduce tube scrap
Reduce downtime
Reduce user manual intervention with the bender control
Produce more tubes every day



THIS IS A TRUE STORY OF AN ACTUAL BENDERLINK INSTALLATION

This Benderlink system was considered a test case for the customer. They wanted to be sure that the new Benderlink system was not just another money-wasting gadget before recommending the system to other divisions. The new system was a success, and is now highly recommended to other divisions. Read the story to see why.

- **ABOUT THE TUBE FABRICATOR**
As a fabricator of air-conditioning and power-steering tube assemblies, this customer's tube fabrications often contain 15 or more bends. The tube shapes wrap in every direction. They're not just the simple, mostly horizontal, tube shapes.
- **COMPLICATED SETUP**
When the operator finished the original bender setup with creative avoidance moves, his job had just begun. Some of their parts are so complicated that they required hours (yes - they told us *hours*) of tweaking before the machine was completely setup for bending.
- **THE NEW MEASURING CENTER**
They were able to acquire a SupraGauge Plus measuring center from another division. Then they contacted Advanced Tubular Technologies to complete the networking of all the benders and the measuring center with Benderlink.
- **MULTIPLE BENDERS OF DIFFERENT TYPES**
They had one newer Chiyoda and six older style Chiyoda benders. They agreed that the best approach for the design of the system would be to integrate a network of all the Chiyoda benders with a single Benderlink workstation near the measuring center.

See the next page for the conclusion to the story...



Tube fabrication
software solutions

Another Benderlink Success Story



Reduced From HOURS to MINUTES



This is a KEINS bender shown with an Eaton Leonard Vector Tube Data Center. Benderlink can connect multiple measuring center formats to CHIYODA and KEINS benders.

THE FINAL TEST

We performed several corrections-loops with multiple benders using real parts. The results were stunning. **Parts were dropping into their gauges with that crisp ringing sound that a good part makes.** The stainless tubes were falling into the gauges after the first corrections-loop. The aluminum parts were doing the same after two or three corrections. (Each corrections-loop, including measuring the tube, only required a few minutes.

SUCCESS

Obviously, they're convinced, as the system has improved their setup adjustment time from hours to a few minutes per part.

RECOMMENDATION

"OTHER DIVISIONS SHOULD IMMEDIATELY RESEARCH THE ADVANCED TUBULAR BENDERLINK SYSTEM."

More Information

- **SITE LICENSE** – For up to 99 benders from one Benderlink computer
- **WIRELESS NETWORK** – We offer Benderlink Ethernet Modules for long-distance networking of your benders
- **OFFLINE LICENSE** – For programming Chiyoda and KEINS data offline
- **WINDOWS COMPATIBLE** - Windows XP and Vista Compatible
- **LOGMEIN RESCUE INSTALLATION** – Our software comes with remote installation support where Advanced Tubular technicians install the software through the

SERVICES AVAILABLE

- Technical Support
- Installation and Setup
- Maintenance
- Application Support
- Hardware Support
- Guaranteed Warranty



Tube fabrication
software solutions

2548 Campbellgate Dr.
Waterford, MI 48329
Phone 248.674.2059
Fax 248.562.3134

TECHNICAL SUPPORT

We offer our LogMeIn Rescue service to remotely access your Benderlink computer for tech-support.

MINIMAL DOWNTIME

The software installs quickly so you can be up and running quickly. In fact, we can even install the software for you over the internet using our LogMeIn Rescue service.

TURNKEY SOLUTIONS

We can supply entire Benderlink networks with network hard drives and automated backup systems. We use and recommend Acronis True Image software for all backup applications. (We personally use what we recommend.)

For more information on any of our products or services please visit us on the Web at:
www.advancedtubular.com